

BUSAN

METRO TRIP



Busan Port Bridge



Busan Tourism Portal 'VISIT BUSAN'
visitbusan.net/en



Busan Tourism Organization
visitbusan.en



Busan Tourism Organization Instagram
[@visitbusan.en](https://www.instagram.com/visitbusan.en)

Publishing Date : August 2022

Busan Tourism
Information call | 1330

Inconvenient
Traffic complaint | 120



Kaya Univ.

Yangsan

Wollae

Nopo

Anbyeong

Daejeo

Deokcheon

Donghae

Deokcheon

Minam

Busan Nat'l Univ. of Edu

Geoje

Yeonsan

Sasang

Bujeon

BEXCO

Seomyeon

Suyeong

Jangsan

Nakdong Estuary Eco Center

Hocheon Village

Hwangnyeongsan beacon Fire Station

Millak Waterside Park

Dalmaji-gil Road

Eulsukdo Bird Sanctuary

Yongdusan Park

Busan Station

Busan Museum

UN Memorial Park

Janglim Port

Gamcheon Culture Village

Gukje Market

Busan International Passenger Terminal

Busan Cultural Center

Lgidae Park

Amisan Observatory

Jagalchi Market

BIFF Square

Yeongdodaegyo Bridge

Huinnyeoul Culture Village

Dadaepo Beach

Songdo Beach

Songdo Marine Cable Car

Huinnyeoul Culture Village

Taejongdae Amusement Park

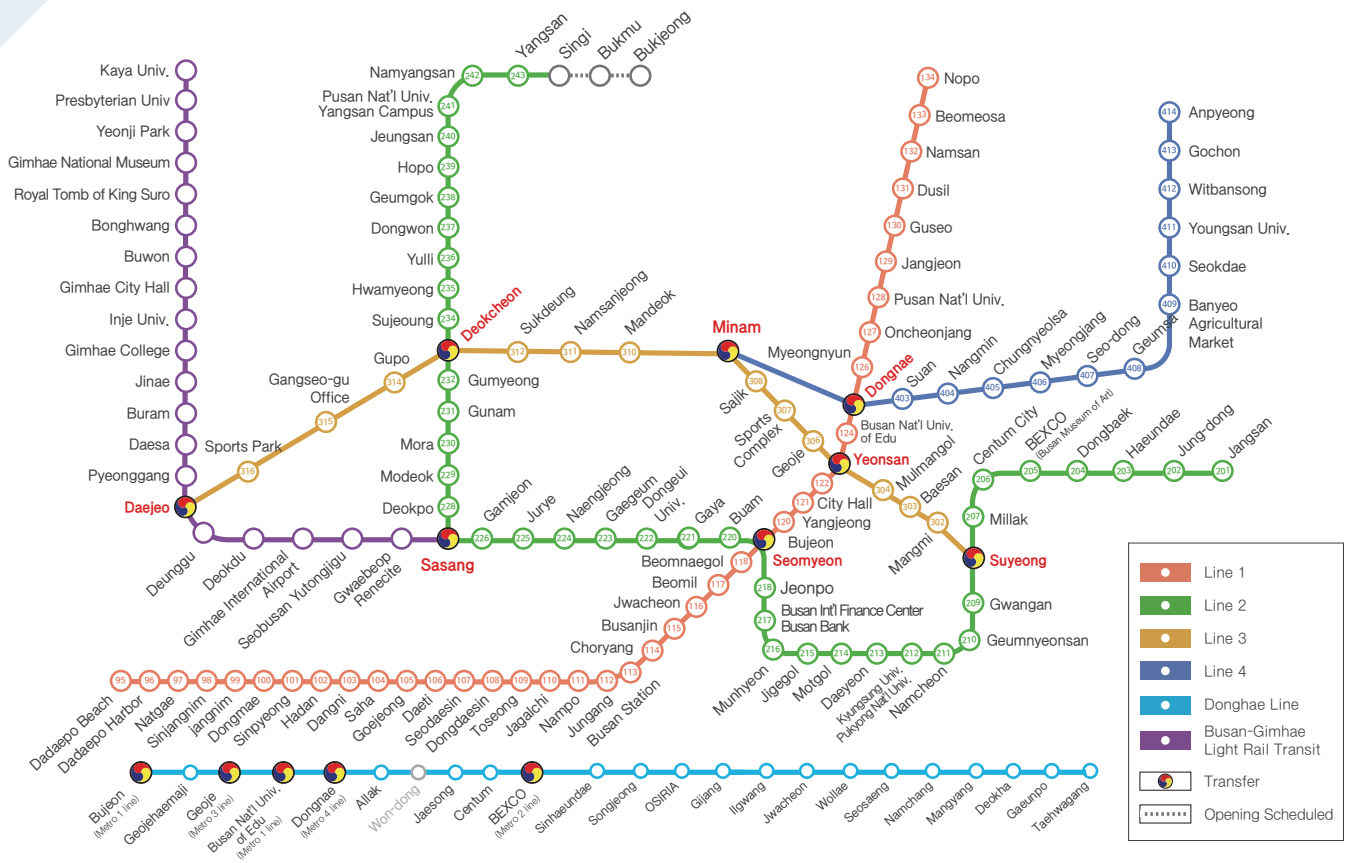
Oryukdo Island

Songdo Yonggung Suspension Bridge

METRO LINE

	Metro Line 1		Busan-Gimhae Light Rail Transit
	Metro Line 2		Transfer
	Metro Line 3		
	Metro Line 4		
	Donghae Line		





Contents

- 06 Meet Busan
- 08 Busan Tour on Metro Line 1
- 26 Busan Tour on Metro Line 2
- 38 Busan Tour on Metro Lines 3•4/
Light Rail Transit / Donghae Line
- 45 Accommodation
- 46 TIP
Busan Tour Info

PUBLIC TRANSPORTATION INFORMATION GUIDE

Fares	<ul style="list-style-type: none"> • Teenagers : aged 13 to 18 • Children : aged 6 to 12 		
Day pass	5,000won (for use on day of purchase)		
One pass	Adults	Teenagers	Children
1 zone	1,400won	1,150won	700won
2 zone	1,600won	1,300won	800won
Bus	Adults	Teenagers	Children
	1,300won	900won	400won
Express City Bus	Adults	Teenagers	Children
	1,800won	1,700won	1,300won

TRANSFER INFORMATION

A reduced fare will be applied when transferring within 30min. Transferring service is available only for two times in a row.

- Must use a transportation card.
- Transfers may not be used on the same bus route or metro line.

TOURIST INFORMATION CENTER

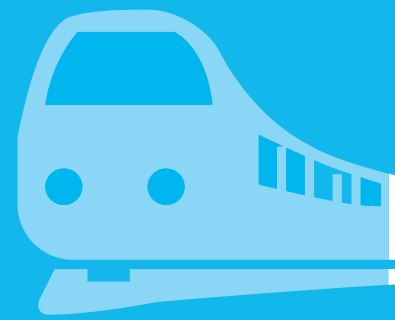
24Hour Interpretation Service
1330 (Area Code 051)

Culture Tour Guide

Provides tourists with interpretation services on Busan's cultural heritage and tourist attractions in an interesting, easy-to-learn way.

- Busan Tourism Organization
780-4151

- Dongnae-gu Tourist Information Center 522-0303
- Seo-gu Tourist Information Center 231-2052
- Jung-gu Tourist Information Center 254-5504
- Yeongdo Welcome Center 419-4048
- Gamcheon Village Information Center 204-1444
- U-tourist Information Center Gwangalli Beach 610-4848
- Haeparang-gil Tourist Information Center 607-6395
- Foreign Service Center 441-3121
- Gimhae Int'l Airport(Domestic Line) Tourist Information Center 973-4607
- Gimhae Int'l Airport(International Line) Tourist Information Center 973-2800
- Busan Central Bus Terminal Tourist Information Center 502-7399
- Songjeong Tourist Information Center 749-5800
- International Passenger Terminal Tourist Information Center 465-3471
- Haeundae Tourist Information Center 749-5700
- Busan Stn Tourist Information Center 441-6565
- Medical Tourist Information Center 818-6395
- Changseon Tourist Information Center 242-8253
- Busan Tourist Information Center 253-8253
- Taejongdae Tourist Information Center 405-8745
- Cheongsapo Daritdol Skywalk Tourist Information Center 749-5720



Meet BUSAN 부산만나기



As the second-largest city and the largest coastal city of Korea, Busan attained its geographical and social importance in Korea during the Korean War as the city that received large influxes of refugees and war supplies. Today, Busan is a beloved destination for Koreans and international tourists alike.



Hi, Busan!

안녕, 부산!

Total area	770.04km ²
Timezone	GMT+9, Korean/Japanese Standard Time
Electricity	220V, 60Hz equivalent to France, Germany, Australia, Greece, and Turkey
National number	+82
Regional number	051 Omit the first "0" when you are calling from outside of Korea.

Currency

화폐단위

The Korean currency is called the won (KRW). The coins in circulation include KRW 10 (embossed with an image of the Dabotap Tower), KRW 50 (embossed with an image of an ear of rice), KRW 100 (embossed with an image of Admiral Lee Sun-shin), and KRW 500 (embossed with an image of a crane). The Korean notes include the KRW 1,000 (blue), KRW 5,000(brown), KRW 10,000 (green), and KRW 50,000 (dark yellow).

Monthly 'Busan' climate

월별 '부산'기후

- March through May Temperature in Busan begins to rise in April, and the average temperature during these months reaches 17° C. Along with the rise in temperature, the amount of precipitation also increases beginning in April. If you are planning to visit Busan during these months, make sure you bring an umbrella. These months tend to be less busy, so it will be easier for you to find accommodation.
- June through September The average temperature in Busan August rises as high as 25.7°C. The annual monsoon hits Busan in June, and a number of typhoons occur in the following two months. Rainfall will be more frequent in September than in August in Busan.
- October and November Busan's mild maritime climate is at its most stable and finest during these 2 months, with an average temperature of 19°C. These are perhaps the best months to visit Busan.
- December through February The weather can get quite chilly in Busan during the winter months, but it is still quite rare to see snowfall in this city. The average temperature stays around 3° C during January. While the winter months tend to have the least amounts of precipitation, the recent climate change makes it difficult to accurately forecast winter precipitation in Busan.

Urban rail transit Metro / Subway

도시철도

City Railway System

Busan Municipal Railway Lines 1–4, Busan Gimhae Light Line, and Donghae Line connect to major city locations, as well as Busan City, Gimhae, and Yangsan in Gyeongsangnam-do, so you can travel to any desired location easily.

Operates from 5:00 a.m. to 23:59 p.m., with first and last train times varying by station and transit times varying by time zone. Please see the schedule posted on the website or at the station for more information.

Public Transportation Ticket

You can pay with a transportation card, a single ticket, or a monthly pass. Tickets are available in one-day, seven-day, and one-month increments. There will be a segment-by-segment difference for single-use tickets and transportation passes, but no segment-by-segment difference for a monthly pass. Ticket vending machines can be found throughout the station.

Emergency contact number

여행 시 비상 연락처

Consulate-general of China

47 Haeyeon-ro, Haeundae-gu ☎(051) 743-7990
busan.china-consulate.org/kr

Consulate-general of Japan

18 Gogwan-ro, Dong-gu ☎(051) 465-5101-6
www.busan.kr.emb-japan.go.jp

American Presence Post

Suite 612, Lotte Gold Rose, 993 Jungang-daero, Jin-gu
☎(051) 863-0731 kr.usembassy.gov

1

LINE

Dadaepo Beach
Dadaepo Harbor

...

Jagalchi
Nampo
Jungang
Busan Station
Choryang
Busanjin

...

Beomnaegol
Seomyeon
Bujeon
Yangjeong
City Hall
Yeonsan

Busan Nat'l Univ.of Edu
Dongnae
Myeongnyun
Oncheonjang
Pusan Nat'l Univ

...

Beomeosa
Nopo

V I S I T V I S I T

BUSAN METRO LINE no.1

Metro Line 1, stretching from North
to South, and even West Busan.
Let's take off for a sightseeing tour of
Busan on Metro Line 1!

B U S A N B U S A N

B U S A N B U S A N

- Dadaepo / Eulsukdo
- Amisan Observatory
- Gamcheon Culture Village
- Songdo / Taejongdae
- Yeongdo / Bosu-dong
- Jagalchi · Gukje Market
- Nampo-dong
- Shanghai Street · Ibagu-gil
- Busan Station / Seomyeon
- Jeonpo-dong · Bujeon-dong
- Beomeosa Temple · Oncheonjang

Dadaepo Sunset Fountain of Dreams

14, Morundae 1-gil, Saha-gu

Make unforgettable memories by requesting a song or sharing your story to celebrate your special day or pop the big question in perfect harmony with the fountain's beautiful lights, magnificent music, and splashing water.



Section	Each month	Performance time	Remarks
Musical water fountain	April ~ August	Weekdays - 8:00 ~ 8:30pm Weekends and public holidays - 8:30 ~ 8:30 pm, 9:00 ~ 9:20 pm	Weekends and holidays perform twice
	September ~ October	Weekdays - 7:30 ~ 8:00 pm Weekends and public holidays - 7:30 ~ 8:00 pm, 8:30 ~ 8:50 pm	

TIP

Let's send a story to various citizen participation programs with the Sunset Fountain. Events created by citizen participation such as song requests, proposals, and congratulatory messages that can be reserved through the website 'Naver' are one of the ways to enjoy 200% of the sunset fountain. Requests for stories can be submitted at least 5 days prior to the performance date.

Information

1

Metro Line 1

- 🚗 Metro Line 1 at Dadaepo Beach (Morundae) Station (Exit 4) ▶ A 3-minute walk
- ☎️ 051) 220-5891~5
- 🏠 saha.go.kr

Eulsukdo Bird Sanctuary & Nakdong Estuary Eco Center

1240, Nakdongnam-ro, Saha-gu

What if a place, once only studied in class, was spread out before your eyes? Eulsukdo is a spot where you can see the Nakdong Delta at the mouth of the Nakdonggang River. The nearby Nakdong Estuary Eco Center is the perfect place to enjoy the flapping of migratory birds through large glass windows, along with the glow of the setting sun. Spacious internal facilities in conjunction with ample parking have drawn positive reviews from tourists. Please note that the center is closed on Mondays.



TIP

Nakdong Estuary Eco Center

Automatic guide devices in multiple languages (Korean, English, Chinese, and Japanese) as well as outdoor binoculars are provided for bird watching. Go to the Information Desk on the first floor for rental.

Section	Fare (2 hours)
Language service (Korean, English, Chinese, and Japanese)	Adults : 2,000won Youth or under : 1,000won
Outdoor binoculars (high magnifications)	5,000won
Outdoor binoculars (low magnifications)	2,000won

Per extra hour

Outdoor binoculars(high magnifications) :+2,500won
Outdoor binoculars(low magnifications) :+2,000won

Information

1

Metro Line 1

- 🚗 Metro Line 1 at Hadan Station (Exit 3) ▶ Transfer to Bus 58, 221, 58-1, 58-2, or 520 ▶ Get off at the Eulsukdo Rest Place Bus Stop.
- ☎️ 051) 209-2000
- 🏠 busan.go.kr/wetland/index

Amisan Observatory

아미산 전망대

Amisan Observatory

77 Dadaenakjo 2-gil, Saha-gu

The best place to have a panoramic view of the Nakdong River Estuary. In particular, not only observing the view, it is beneficial to visit an exhibition hall introducing the topography and geology of the Nakdong River. The view of the estuary at midday is pleasing to the eye, and the red sky at sunset is especially spectacular



Section	Exhibition Guide	Duration
Exhibition Helper	Opening Hours: 9:00 a.m. – 6:00 p.m. (last admission at 5:00 p.m.) Closed: On January 1 and Mondays (or day after public holidays) Admission Fees: Free	20min (self-guided tour)
Docent Tour	Tour Times: 11:00 a.m. Number of Participants: Maximum 4 people Docent: 1 docent specializing in nature and environment	30min

TIP

On the third floor of Amisan Observatory, there is a cafeteria where you can enjoy a cup of tea or other drinks you like. Please note it is closed on Sundays and when the observatory is closed.



Information

- 1 Metro Line 1
- ▶ Metro Line 1 at Goejeong Station (Exit 6) ▶ Transfer to the Bus 2, 11, 96 or 1000
 - ▶ Get off at Daewoo Apartment ▶ A 10-minute walk toward Morundae Catholic Church
- ☎ 051) 265-6863 🏠 saha.go.kr

Gamcheon Culture Village

감천문화마을

Gamcheon Culture Village

203, Gamnae 2-ro, Saha-gu

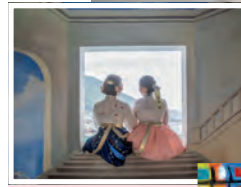
Gamcheon Culture Village is often known as the “Machu Picchu of Korea.” The houses on the terraced hillside, labyrinth-like alleyways and stamp tour will make you want to visit the village again and again.



TIP

Souvenirs and Cafe

Various souvenirs of Busan and Gamcheon are available including handmade bracelets with custom designs, a cup of coffee at a scenic hilltop cafe, Hanji craft hand mirror, and mini mackerel-shaped cushion.



Information

- 1 Metro Line 1
- ▶ Metro Line 1 at Toseong Station (Exit 6) ▶ Transfer to Saha-gu Town Bus 1-1, Seo-gu Town Bus 2, or 2-2 ▶ Stopover at Gamjung elementary school bus station
- 🏠 gamcheon.or.kr ☎ 051) 204-1444

Songdo Beach

100, (Amnam-dong), Songdo Beach-ro, Seo-gu

Songdo Beach is the first designated swimming beach in Korea. A special attraction of Songdo finally came up. It is Songdo Marine Cable Car that is restarting its operation at June 21st 2017, in 29 years. It's the first marine cable car across the sea and the sky around the beach. Also, you can enjoy many things to see over the sea such as SkyWalk, Songdo Coast Bolle-gil Walkway, Taejongdae, Huinyeoul Culture Village, Namhang Bridge as well as Songdo Beach



TIP

Busan Air Cruise

Busan Air Cruise offers a total of 39 cable cars, including 13 crystal cabins, that run 1.62 km between Songnim Park in the eastern part and Amnam Park in the western part of Songdo Beach. It is also equipped with various themed facilities. If you want to experience an exciting flight above the sea, you should check it out.

Information

1 Metro Line 1

- Metro Line 1 at Nampo Station (Exit 1) ▶ Bus 7, 9-1, 26, 30, 71 ▶ Songdo Beach Entrance
- (051) 247-9900
- busanaircruise.co.kr

Songdo Gureum(Cloud) Walk

129-4, Amnam-dong, Seo-gu

The Maritime Walking Course is the longest and the first curve-shaped skywalk in Korea. Guests can walk along the skywalk to reach an observatory that hovers above the middle of the sea.



Songdo Yonggung Suspension Bridge

193, Amnam-dong, Seo-gu, Busan

The Songdo Yonggung Cloud Bridge is a 127m long and 2m wide pier that connects the upper part of Dongseom Island, a small uninhabited island across the sea from Amnam Park, where visitors can experience the thrills of walking on the sky. Strange rapids shape the sea and the natural scenery.



Information

1 Metro Line 1

- Subway Line 1 Jadachi Station (Exit 1) ▶ Walk to Chungmu-dong Interchange and transfer to Bus 7 ▶ Get off at Amnam Park
- (051)240-4088

Taejongdae Amusement Park

24, Jeonmang-ro, Yeongdo-gu

Taejongdae Amusement Park, located at the southernmost tip of the Yeongdo Coast in Yeongdo-gu, Busan, has been designated as National Cultural Heritage No. 17 and has been named one of Korea's Top 100 Tourist Attractions five times. This is a typical Busan coastal tourist attraction from which you can see the entire Korean Strait and Busan.



Danubi Train

Danubi Train is a circular train that runs on a 4.3km ring road in Taejongdae Amusement Park and travels all over Taejongdae, where you can enjoy the beautiful coastal scenery and tourist attractions in Taejongdae.

Course : Observatory ⇒ Yeongdo Lighthouse
⇒ Taejongsa Temple

Fee : (Circulation) 4,000won,
(one way) 2,000won



TIP

Let enjoy Taejongdae while in AR.

From the battle with monsters on the green forest road to the cool sea and coastal scenery of Taejongdae Amusement Park, AR photos and hydrangeas, AR buskers, AR augmented shops, and so on. Let's go on a one-of-a-kind AR ride.

Information

1 Metro Line 1

- Metro Line 1 at Nampo Station (Exit 6) ▶ Transfer to Bus 8, 30, 66, 88 or 186 ▶ Get off at Taejongdae and walk to Taejongdae Resort Park for 3 min (plus, 30 minutes required to the observatory)
- (051) 405-8745 taejongdae.bisco.or.kr

Huinnyeoul Culture Village

1044-6, YeongSeon-dong 4ga, Yeongdo-gu

The neighborhood was born when Korean War refugees flocked to this area and provides an unhindered view of both the Busanhang and Namhang Ports. A major backdrop of the acclaimed Korean movie, The Attorney, the neighborhood was also featured in yet another Korean hit, Nameless Gangster : Rules of Time. The small houses that stand shoulder to shoulder form the signature look of Busan, which is often remembered as a city of the sea and hilly neighborhoods. The village continues to attract an increasing number of visitors with its new cafes, workshops, and guesthouses.



Information

- 1 Metro Line 1
- Metro Line 1 at Nampo Station (Exit 6) ▶ Transfer to Bus 6 or 508 (Night Bus) at Yeongdodaegyo Bridge ▶ Get off at Busan Healthcare High School ▶ Walk 740m towards Huinnyeoul Culture Village
- ☎ 051)419-4067 🏠 ydculture.com

Yeongdodaegyo Bridge

Taejong-ro (Daegyo-dong 1ga), Yeongdo-gu

This is the first suspension bridge in Busan, whose function as a bascule bridge has finally resumed after 47 years. In the past, people gathered here to engrave their names on the bridge rails and receive news of their families during the Korean War. The Yeongdodaegyo Bridge often appears in songs about missing and loving those closest to us. Why not listen to some moving music here?



TIP

This bridge is raised once every Saturday at noon (14:00 to 14:15). Many tourists take pictures with the raised bridge in the background. There it may be better to go to the bridge earlier if you want to find better photo opportunities and, for that matter, to the famous Eomuk bakery as well, another symbol of Busan

Information

- 1 Metro Line 1
- Metro Line 1 at Nampo Station (Exit 8) ▶ Walk straight 200m

Bosu-dong Bookstore Alley

8, Chaekbanggolmok-gil, Jung-gu

'Books should last forever' and the Bosu-dong Bookstore Alley boasts a 50-year history and is home to more than 50 bookstores lined with tens of thousands of books. Anyone can buy books at an affordable price or choose to sell their own books if they wish. Why don't you take a break while looking around the small Mural Street located above the alley? The murals show the unique characters of bookstore alley as if from the pages of a fairy tale.



TIP

Dessert in the alley

It is natural to be hungry after browsing through a lot of books. Discover the famous restaurants hidden in the alley. There is a snack bar well known for its croquettes. You are sure to enjoy them with the scent of books in the background, and why not try some of the other delicious treats that can be found in the area such as doughnuts, dumplings, and patbingsu (red bean and ice dessert).



Information

- 1 Metro Line 1
- Metro Line 1 at Jagalchi Station (Exit 3, 5 and 7) ▶ Walk straight Toward Nampodong and Gukje Market (about 12 minutes required on foot to Bosu-dong Bookstore Alley)
- 🏠 bosubook.com

Jagalchi Market

52, Jagalchihaean-ro, Jung-gu



Jagalchi Market is famous for the slogan, “Come, See, and Buy.” It is a place where you can feel the unique friendliness of Busan. A selected fish can be sliced on the spot for you to eat raw. Watching a flopping fish cleaned into sliced raw fish is in itself an amazing scene. Jagalchi Market is a must-see place for tourists.



Information

- 1 Metro Line 1
- Metro Line 1 at Jagalchi Station (Exit 10) ▶ Walk 300m toward Jagalchi1-gil
- ☎ 051) 713-8000 🏠 jagalchimarket.bisco.or.kr

Gukje Market

Sinchang-dong 4-ga, Jung-gu

It is an enormous market located in Nampo-dong, which can be roughly divided into several subsections, such as Food Street, Youth Street, Everything Street, Arirang Street, and Vintage Street. It is also known as “Dottegi Market.” “Dottegi Market” refers to a disorderly, bustling, and unusual flea market where people used to sell off second-hand goods and junk at wholesale, retail, or under the table prices. The name originated from the fact that when Japanese people rushed back home following the independence of Korea, their leftover belongings went up for bidding. It has been said that there were lucky people who received a financial windfall at that time. One more thing to keep in mind is that this place is known as the heaven of snacks because each cranny is full of street snacks, including spicy glass noodles, sweet red bean porridge, and spicy rice cakes.



Information

- 1 Metro Line 1
- Metro Line 1 at Jagalchi Station (Exit 7) ▶ Walk 400m toward Gukje Market
- ☎ 051) 245-7389 🏠 gukjemarket.co.kr

BIFF Square

Throughout BIFF Gwangjang-ro, Jung-gu

It is the best-known place where you can feel the atmosphere of Busan, the city of film. Do not miss an exciting chance to take a look around at the handprints of filmmakers and enjoy the delicious local food.



National Museum of Korean Contemporary History, <http://archive.much.go.kr>

Information

- 1 Metro Line 1
- Metro Line 1 at Jagalchi Station (Exit 7) ▶ Walk 300m toward Lotte Cinema Daeyoung
- 🏠 bsjunggu.go.kr

Yongdusan Park

37-55, Yongdusan-gil, Jung-gu

The 120m high Busan Tower commands a particularly impressive view of Busan. It is also loved as a break area downtown where various programs and events are held each season. Please note that it can be easily reached by using the escalator leading to the park which was installed on Gwangbok-ro Street.

※ Every year, on March 1st and the end of the year, the ceremony "Citizen's Bell" is here



TIP

Busan Diamond tower

T5(Observation upper floor)	Fireworks mapping show / realistic observatory
T4(Observatory lower floor)	Flying submarine
T2 (Exhibition floor)	Colors of Busan/Four seasons of Busan/Fireworks Festival
Lobby	Information Desk/Observatory Entrance Photo Desk/Snack Corner/Souvenir Shop

- ▶ KRW 12,000 for adults (over 13 years of age) ▶ KRW 9,000 for children (over 3 years of age)
- ▶ Price/discount inquiries (Diamond Tower) 051-601-1800

Information

- 1 Metro Line 1
- Metro Line 1 at Nampo Station (Exit 1) ▶ 200m to Gwangbok-dong Fashion Street ▶ Use the escalator bound for Yongdusan Park
- 051) 860-7820
- yongdusanpark.bisco.or.kr

Shanghai Street

Jungang-daero 179beon-gil, Dong-gu

This street was formed to commemorate the exchange between Busan and Shanghai, China. The red Shanghai Gate erected at the entrance was produced in China. There are various stores displaying Chinese culture such as Chinese restaurants and Chinese traditional tea houses.

TIP

Do you remember the scenes where the actor Choi Min-sik eagerly ate dumplings in the movie 'Oldboy,' and the actor Kim Myeong-min and actress Ha Ji-won had a meal in the movie 'Closer to Heaven' The Chinese restaurant in those movies is right on Shanghai Street.



Information

- 1 Metro Line 1
- Metro Line 1 at Busan Station (Exit 1) ▶ Walk 5 minutes to the Shanghai Gate of Shanghai Street
- 051) 440-4061-6

Sanbokdoro · Choryang Ibagu-gil

14-13, Manghyang-ro 486beon-gil, Dong-gu

This sanbok (mountain slope) road opened in 1964. Designed in the course of urban planning, it has emerged as a new attraction for a panoramic night view of Busan. Among all the sanbok roads in Busan, it has the best perspective of the heart of Busan.

TIP

168 Stairs and Monorail

168 Stairs refers to a steep staircase as tall as a 6-story building, which is one of the best-known features along the mountainside road. With a total of 168 steps, in May 2016, a 60-meter-long monorail was built right next to the 168 Stairs.



Information

- 1 Metro Line 1
- Metro Line 1 at Busan Station (Exit 7) ▶ Walk 15 minutes (about 860m)
- 2bagu.co.kr/index

Busan station

206, Jungang-daero, Dong-gu

The center of Busan is Busan Station. This is the first place where tourists to Busan get off. Using Exit 6, you can go directly to the city tour Bus Stop for themed tours around Busan.



Use the Busan City Tour Bus

Departure point for reserved city tour and theme route

- Busan Station Boarding Point: In front of Ramada Encore Hotel in Busan Station Square (Exit 6, 8 Busan Station, Subway Line 1)

Fees / Holiday Information

- Adults 15,000 won / Children (48 months - High school students) 8,000 won
- Group (Over 15 people, regardless of adult or child) - Discount 2,000 won / person
- When changing routes, adults 5,000 won, children 3,000 won, separate route change fee

•Holidays: Every Monday and Tuesday (If Monday is a national holiday, normal operations)

Line Information

- Red Line (Yeohaendae Roundabout Busan Station) 9 trips every 50 minutes (every week - Wednesday, Thursday, Friday, Saturday, Sunday)

- Green Line (Busan-Taejongdae Station) 9 trips every 50 minutes (every week Wednesday, Thursday, Friday, Saturday, Sunday)

- Blue Line (Yongho Bay Marina - Haedong Yonggungsa) 9 trips every 50 minutes (every week - Wednesday, Thursday, Friday)

Night Tour (Bridge sightseeing)

- Route information : Busan Station ▶ Busan Bridge ▶ Busan Harbor Bridge ▶ Gwangalli Beach ▶ Suyeong Bridge No. 2 ▶ Marine City ▶ Haeundae Beach ▶ BEXCO ▶ City Art Museum ▶ Gwangan Bridge ▶ Busan Harbor Bridge ▶ Namhang Bridge ▶ Songdo-reum Promenade ▶ Jagalchi Gukje Market ▶ Busan Station

- Fee : Adults 15,000 won / Children (48 months - High school students) 8,000 won

- Activities : Busan Station <-> Busan Pier (every week - Friday and Saturday)

- Operating hours : April to October (19:30), November to March (19:00)

Information

1
Metro
Line 1

🚗 Metro Line 1 at Busan Station or Metro Line 1 at Jungang Station (Exit 11) when visiting 40-step Cultural Tourism Theme Street

▶ Move about 270m

☎ 1544-7788

Seomyeon Underground Shopping Center

717, Jungang-daero, Busanjin-gu

Seomyeon Underground Shopping Center, directly connected to Seomyeon Metro Station, consists of about 330 stores with approximately two hundred thousand visitors passing by on weekdays. It is crowded all year round because of the benefit of having a Metro transfer station, department store and Busan Medical Street all in one place.



TIP

Opening hours

The Seomyeon Underground Shopping Center is closed the first Tuesday of each month. Because all the stores are closed on that day, it would be better to check the holiday dates every month before visiting. operating time 10:00 am-10:00 pm

Information

1
Metro
Line 1

🚗 Metro Lines 1 and 2 at the underground center of Seomyeon Station
🏠 busanjin.go.kr

Seomyeon Eatery Alley

Sincheon-daero 62beon-gil, Busanjin-gu

Let's visit a food lover's paradise, the Seomyeon Eatery Alley. A variety of dishes such as Topokki (stir-fried rice cake), Eomuk (fish cake), and Sundae(Korean sausage) served at cart bars. Dwaegi-gukbap (pork rice soup) restaurants boasting the taste of their thick soups stand close together, and the vast array of chopped noodles served at an affordable price are reminiscent of past times. The tasty smell of chickens fried in a traditional way fills chickenalley, stimulating the senses.

TIP

There are different eatery alleys boasting distinctive dishes at every corner of Seomyeon. While searching for your desired food such as a whole fried chicken, chopped noodles, or gukbap among many others, you can have a look around the streets of Seomyeon.



Information

1
Metro
Line 1

🚗 Metro Line 1 at Seomyeon Station (Exit 1) ▶ Walk 100m from where you come out.

Jeonpo Cafe Street

Throughout Jeonpo-daero and Seojeon-ro, Jeonpo-dong



It is a place full of things to see, eat, and buy. Not far from Seomyeon 1beonga, one of the busiest streets in Busan, you will be able to find a quiet cafe street filled with about 30 unique coffee shops beautifully decorated. It is worth noting that originally, in Bujeon-dong and Jeonpo-dong, there was also a street full of hardware shops selling industrial supplies and tools.

TIP

There is a department store next to Cafe Jeonpo Street, which is known as a dating street where meals, desserts, and shopping can be enjoyed while also taking in the cultural life

Information

- 1** Metro Line 1
 Metro Line 1 at Seomyeon Station (Exit 6) ▶ Move about 230m toward NC Department store ▶ 5 min walk to Playmaru (Busan Student Arts and Cultural Center)

Busan Citizens Park

73, Simingongwon-ro, Busanjin-gu

It is Busan's largest urban park with a size of 520,000m², equipped with woodland paths, walking trails, a labyrinth garden, a sandy beach within the park, a culture and arts village, a book cafe in the forest, children's play areas, and a large grass square. In particular, a tunnel fountain, musical fountain, and high fountain soaring into the sky are the must-see attractions available only at Busan Citizens Park.



TIP

Fresh diversions such as Sky-Colored Falls, a Tunnel Fountain, and Musical Fountain are only provided in this park. They run four times a day on weekdays and six times a day on holidays between April and October. Note that they do not run every Monday.

Information

- 1** Metro Line 1
 Metro Lines 1 and 2 at Seomyeon Station (Exit 7) ▶ Transfer to Bus 33 ▶ Get off at Busan Citizens Park
 ☎ 051) 850-6000 🏠 citizenpark.or.kr

Beomeosa Temple

Beomeosa Temple, 250, Beomeosa-ro, Geumjeong-gu

A temple founded by Buddhist Master Uisang during King Munmu reign in Silla is one of the three major temples in the Yeongnam Region including Haeinsa Temple and Tongdosa Temple. With a trail through a grove of soaring bamboo stalks and blooming apricot flowers in spring, it is a serene spot to feel peace and quiet.



Information

- 1** Metro Line 1
 Metro Line 1 at Beomeosa Station (Exit 5) ▶ Transfer to Bus 90 ▶ Get off at Beomeosa Temple
 ☎ 051) 508-3122 🏠 beomeo.kr

Oncheoncheon Civic Park

288, Oncheoncheon-ro, Dongnae-gu

The Oncheoncheon River was born in 2005 as a result of a nature-friendly river formation project. Since then, it has been a beloved spot for leisurely walks and romantic dates. The riverside walking trail and bicycle path invite locals and visitors to take a break and relax amid nature. The in-line skating tracks, basketball court, badminton court, and other sports facilities keep visitors engaged in exciting and fun sports



Information

- 1** Metro Line 1
 Metro Line 1 at Oncheonjang Station (Exit 1)
 ☎ 051) 550-6642
 🏠 oncheon.dongnae.go.kr

2

LINE

Yongsan ... Hwamyeong Sujeong Deokcheon ... Sasang ... Seomyeon Jeonpo BIFC-Busan Bank Kyungsoong Univ. Pukyong Nat'l Univ. Namcheon Geumnyeonsan Gwangang Suyeong Millak Centum City BEXCO Dongbaek Haeundae Jung-dong Jangsan

V I S I T V I S I T

BUSAN METRO LINE no.2

Let's take a ride on Metro line 2!
You can take in a full range of Busan's attractions including the beautiful night views in Haeundae and Gwangang, the BIFC building, and the Busan Cinema Center to top off your journey through this city of film!

N B U S A N

B U S A N B U S A N

- Haeundae
- Centum City · Marine City
- Gwangang
- Millak-dong
- Igidae Park
- Kyungsoong Univ · Pukyong Nat'l Univ
- Daeyeon-dong
- Busan International Finance Center

Dalmaji-gil Road

Jung 2-dong, Haeundae-gu

Come to Muntan Road, the pride of Busan, and bask in the moonlight. This is commonly referred to as the "Road to the Full Moon."

The sight of cherry trees and pine trees lining the pass that connects the hillside from Haeundae Beach to Songjeong Beach is breathtaking.



Information

- 2 Metro Line 2
- Metro Line 2 at Jangsan Station (Exit 6) ▶ Transfer to TownBus 2, 7, 10 ▶ Get off in front of The World's Mystery Library
- ☎ 051) 749-5700 🏠 sunnfun.haeundae.go.kr

BUSAN X the SKY

30 Dalmaji-gil, Haeundae-gu (Middle East) L City Landmark Tower 100F

BUSAN X the SKY is located on the 100th floor of Haeundae LCT The Sharp Landmark Tower ([Jung-dong], 30, Dalmaji-gil, Haeundae-gu, Busan), the second-tallest building (411.6 m) in Korea. It is Korea's best and largest observatory, blessed with both a vast ocean view in front of Haeundae Beach and an extraordinary panorama of Busan.



Information

- 2 Metro Line 2
- Come out of (Exit 7) of Jungdong Station on Busan Metro Line 2. ▶ Walk 844 m to LCT.
- ☎ 051) 731-0098, 0099 🏠 busanxthesky.com

Dongbaekseom Island

Throughout Dongbaekseom Island, U-dong, Haeundae-gu

Located at the southern end of Haeundae Beach, Dongbaekseom Island creates a picturesque scene in harmony with a thick forest of camellias and pine trees. Tourist attractions in Dongbaekseom Island include a walking path and the Nurimaru APEC House built for the 2005 APEC summit.



TIP

Nurimaru APBC5F Usu

To commemorate the APEC Summit, a venue was established on Dongbaekseom Island. The traditional Korean architecture pavilion has been modernized and is regarded as one of the most beautiful conference halls ever constructed. Where you can see summit photos and notes.

Information

- Metro Line 2 at Dongbaek Station (Exit 1) ▶ 800m toward ▶ The Westin Chosun Busan ▶ Dongbaekseom entrance

Haeundae Beach

264, Haeundaehaebyeon-ro, Haeundae-gu

Going beyond Busan, Haeundae is beloved throughout the country as a vacation spot. It teems with so many attractive places such as 5-star hotels, restaurants, and an aquarium. In addition, it boasts outstanding popularity and receives more than million tourists annually, particularly in the summer season. Haeundae is a must-visit site when you visit Busan



Information

- Metro Line 2 Haeundae Station. (Exit No.3, 5) ▶ 600m toward undae haebyeon-ro
- ☎ 051) 749-7611-7
- 🏠 sunnfun.haeundae.go.kr

TIP

Haeundae traditional market

Just five minutes away from the beach and filled with delicious dishes, this market is always busy with TV film crews, too. There are sushi restaurants serving a variety of fresh raw fish on the spot such as eel, sea squirt, domi (sea bream), and flounders. Also, Dwaejjigukbap (pork and rice soup), a representative Busan food, can be enjoyed near here.

Haeunde Blueline Park

Ga Cheongsapo 116, Cheongsapo-ro, Haeundae-gu

Where the blue sky meets the sea! Mount Dongbu's beautiful coastline can be enjoyed by taking a 30-minute train ride from Haeundae to Mipo, Cheongsapo, and Songjeong. It operates in two modes: ocean boat and cable car.

- ticket offices : Mipo Station, Cheongsapo Station, and Songjeong Station
- operation : 9:30 a.m. to 9:30 p.m.



Information

- 2 Metro Line 2
- Jangsan Station (Exit 11) Metro Line 2 ▶ Bus No. 200 Mipo, getting off at Moontan Road entrance
- ☎ 051) 701-5548 🏠 bluelinepark.com/booking.do

APEC Naru Park

93, Suyeonggangbyeon-daero, Haeundae-gu



This is a small park in the city center that stretches along the Suyeong River, but it has tables where you can read books and a walking trail as well as a sculpture park with jogging tracks. Sculptures are on display throughout the park as part of the Busan Biennale, and there is an illuminated fountain in Suyeonggang that changes color from time to time.

Information

- Metro Line 2 at Centum City Station (Exit 12) ▶ A 10-minute walk
- 051) 749-4000 dureraum.org

Haeundae Cine Road

U-dong, Haeundae-gu



Haeundae Cine Road extends from Dongbaekseom Island to the Yacht Center. It features trick art on the ground as well as a 10 Million-viewers Movies Zone, Animated zones, Haeundae Background Movie Zone, and more. You can also appreciate the sculptures and hand prints in Santorini Square.

TIP

You can enjoy the taste of macaroons by Pierre Ledent, known as the best Belgian chocolatier in Europe, in Marine City. How do macaroons prepared with recipes that have been passed down through four generations taste? Though a little pricey, the extra tug on your purse strings is worth it because you can experience the taste of authentic Belgian chocolate.



Information

- Metro Line 2 at Dongbaek Station (Exit 3)
- ▶ About 1.23km toward Marine City (18 minutes required)

Busan Cinema Center

120, Suyeonggangbyeon-daero, Haeundae-gu

The heart of Busan as a representative film city of Asia is the Busan Cinema Center in Centum City. It's comprised of different multi-purpose halls such as three exclusive theaters, an outdoor stage, 'BIFF Hill' and 'Cinemountain.' The opening and closing ceremonies of the Busan International Film Festival as well as red carpet events are held here.



TIP

This provides 22,000 sorts of diverse film-related materials. In particular, materials related to showings of the Busan International Film Festival can only be seen here. Anyone can use the archive from 9 a.m. to 6 p.m. ID cards are required.

Information

- Metro Line 2 at Centum City Station (Exit 12) ▶ 600m toward Suyeonggangbyeon-daero
- 051) 780-6000 dureraum.org

Gwangalli Beach · Gwangandaegyo Bridge

219, Gwanganhaebyeon-ro, Suyeong-gu

Gwangalli Beach is known for its breathtaking night view with Gwangandaegyo Bridge stretching across the ocean in the background. Gwangalli Beach offers a variety of entertainment and performances, including Gwangan Bridge laser shows (Friday and Saturday) and drone light shows. Enjoy in all seasons, including the annually held Busan Fireworks Festival.



TIP

Equipped with the world's largest LED lighting and sound facilities for bridges, Gwangandaegyo Bridge has a multidimensional outdoor landscape lighting system. You will be able to enjoy the breathtaking view of the bridge with fantastic lighting from sunset to 12:00 (midnight) on weekdays (from Sunday to Thursday) and from sunset to 2:00 a.m. on weekends (from Friday to Saturday) as well as an amazing laser show three times a day (8:30, 9:30, 10:30 p.m.) for about 10 minutes over the beautiful night sea of Gwangalli.



Information

2

Metro
Line 2

- 🚗 Metro Line 2 at Gwangan Station (Exit 3, 5) ▶ 700 meters toward Gwangalli Beach
- ☎ Suyeong District Office Tel : 051) 610-4000
U-Tourist Information Center : 051) 610-4848
- 🏠 gwanganbridge.bisco.or.kr

Millak Waterside Park

361, Gwanganhaebyeon-ro, Suyeong-gu

It is Korea's first waterfront park, a place of relaxation where you can enjoy the ocean view, located between Haeundae and Gwangalli. Millak Waterside Park with a size of 33,057m², accommodates up to 40,000 people, equipped with amenities, such as benches, shade huts, flower gardens, and a walkway with colored blocks. Sitting in the stands, with a size of 3,040m², you can even enjoy dipping your feet in the sea at high tide.



TIP

This waterside park bordered with plenty of restaurants is always bustling with nightlife. Sushi restaurants make up most of the eateries, but many venues such as a gelato ice cream store, a luxurious Chinese restaurant, and Yeontangui (meat roasted on briquettes) are also hidden in the area. Be sure to look carefully around the water-side park.

Information

2

Metro
Line 2

- 🚗 Metro Line 2 at Gwangan Station (Exit 5) ▶ Transfer to Bus 83-1
▶ Get off at Millak Waterside Park
- 🚗 Metro Line 2 at Millak Station (Exit 1) ▶ Transfer to Bus 210 ▶
Get off at Millak Waterside Park

Millak-dong Raw Fish Street

Across from Gwangalli Beach Theme Street, Gwanganhaebyeon-ro, Suyeong-gu

Millak-dong Raw Fish Street is proudly recognized as a food theme street by the Ministry of Culture, Sports and Tourism and the Korea Tourism Organization. It features a view of Gwangandaegyo Bridge, across tables filled with raw fish. Selected fish can be tasted as sashimi on the spot.

TIP

The more you know, the more you can enjoy the taste of seasonal raw fish.

- Spring : Domi (tripletail), gray mullet, black rockfish, anchovy, dark-banded rockfish, spotty belly greenling, etc.
- Summer : Stripedbeakperch, bass, croaker, hiramakingfish, horse mackerel, sawedgedperch, pikeconger, etc.
- Fall : Gizzardshad, squid, salmon, hairtail, Spanish mackerel, mackerel, long-legged octopus, etc.
- Winter : Black sea bream, bastard halibut, black rockfish, yellowtail, gray mullet, Kareius bicoloratus, monkfish, halfbeak, etc.



Information

2

Metro
Line 2

- 🚗 Metro Line 2 at Gwangan Station (Exit 3) ▶ Go straight toward Gwangalli Beach Intersection, turn left at the beach road, and then go straight

Igidae Park

68, Igidaegongwon-ro, Nam-gu (Yongho-dong)



This is where you can see Gwangan daegyo Bridge at a slightly different angle. It is a hidden view point whose real view is known to only a few people. The coastal walk gives you a chance to appreciate this area's natural beauty of the sea and jagged cliffs. Particularly, it commands a world-class night view of Marine City as well as Gwangan Bridge.

TIP

This is where actor Lee min-gi and actress Gang ye-won had a talk in the movie "Haeundae," and is also particularly special because of its impressive night view in harmony with Gwangan Bridge.

Information



- 🚌 Metro Line 2 at Kyungsoong Univ·Pukyong Nat'l Univ Station(Exit 3, 5) ▶ Transfer to Bus 20, 22, 27, 39, or 131 ▶ Get off at the Igidae Entrance Bus Stop ▶ About 1.8 kilometers toward Igidae Park (16minutes on foot)
- ☎ 051) 607-6361

Oryukdo Skywalk

137, Oryukdo-ro, Nam-gu



A feast of waves up to 30 meters long. The transparent U-shaped floor gives the impression of floating in space. This location, which connects the East and South Seas, is becoming known as a national tourist destination, with over 1 million visitors per year.

Information



- 🚌 Metro Line 2 at Kyungsoong Univ · Pukyong Nat'l Univ Station(Exit 3, 5) ▶ Transfer 24, 27, 131 bus ▶ Stopover at Oryukdo Skywalk bus station
- ☎ HaeParang St. Tour Guide Office : 051) 607-6395
- ☎ Facility Management Office : 051) 607-4937

Kyungsoong Univ · Pukyong Nat'l Univ. Cultural Alley

36-1, Yongso-ro 13beon-gil, Suyeong-gu

Cultural Alley (Kyungsoong Univ./Pukyong Nat'l Univ.) is packed with restaurants, shopping streets, small theaters, and entertainment venues. It is where diverse trends coexist. It has its own special charm. In particular, the composite space known as Culture Alley was created by remodeling private houses to reproduce an atmosphere drenched in the past and so enjoyed by the older generation. Various theaters and cafes are very impressive.



TIP

There are many good, affordable, and authentic restaurants usually found near universities. Why not travel to these areas to find restaurants which have become hot spots through word of mouth? It is said that pub style corner stores have sprang up, where you can enjoy simple meals and live music at the same time.



Information



- 🚌 Metro Line 2 at Kyungsoong Univ · Pukyong Nat'l Univ Station(Exit 1) ▶ Move straight 100m and turn right ▶ Go straight 50m toward

Busan Cultural Center · Busan Museum

1 / 63, UN Pyeonghwa-ro 76beon-gil, Nam-gu



Located on UN Pyeonghwaro Road, Namgu Busan Cultural Center and Busan City Museum are living proof of Busan's history and emotions. As a venue of various performances and exhibitions, the Busan Cultural Center has developed into a multicultural space satisfying both Busan citizens and tourists appetite for culture. Situated in the vicinity of the Busan Cultural Center, the Busan Museum also displays the history of Busan at a glance, with language service in English, Japanese, and Chinese.

TIP

Dwaeji-gukbap (pork and rice soup) in Daeyeon-dong is already well-known nationwide. Come out of Exit 3 at Daeyeon Station on Metro Line 2 and go straight toward UN Pyeonghwa-ro. You can't miss it. It is said that people are willing to line up to eat the dish, dwaeji-gukbap. Try it for dinner.



Information

2
Metro
Line 2

- Metro Line 2 at Daeyeon Station (Exit 3, 5) ▶ Walk 10 minutes toward Busan Museum
- Busan Cultural Center : 051) 607-6000
- Busan Museum : 051) 610-7111
- bscc.or.kr / museum.busan.go.kr

UN Memorial Cemetery

93, UNpyeonghwa-ro, Nam-gu

Let's look around the first UN-related memorial hall in Busan. It is composed of diverse exhibition halls which reproduce scenes of the Korean War. You can look around themed places such as the permanent exhibition halls, special exhibitions, a 4-D theater, and observatory.



Information

2
Metro
Line 2

- Metro Line 2 at Daeyeon Station (Exit 3) ▶ About 580m toward UN Gyocharo (10 minutes on foot) ▶ About 470m toward the UN Memorial Park (7 minutes on foot)
- 051) 625-0625
- unmck.or.kr

BIFC

40, Munhyeongeumyung-ro, Nam-gu

A tremendous 63-story building has been erected as a new landmark for Busan finance. The BIFC (Busan International Finance Center) is a smart comprehensive financial complex equipped with advanced facilities and high-speed systems. Individual business zones with services such as food and beauty care will be established in the BIFC Mall.

TIP

Munhyeon-dong is highly recommended if you are searching for nearby popular restaurants. Here is one made even more famous after the box office hit movie "Friend." Walking 650 meters toward Munhyeon Junction from Exit 1 or 2 at Munhyeon Station, you can find Munhyeon Gopchang Alley. Gopchang is a representative Busan dish which has been beloved steadily since the 70s and 80s. Why don't you fall in love with the taste of gopchang?



Information

2
Metro
Line 2

- Metro Line 2 at Busan International Finance Center Station (Exit 3)
- ▶ 131m from the exit (2 minutes on foot)

Dream Theatre, Busan

133, Jeonpo-daero, Nam-gu, 3rd floor

A world-class hit performance is being held in Busan. Dream Theater, the largest musical theater in Korea with 1,727 seats, is a state-of-the-art facility optimized for performances. There are major performances such as <Lion King>, <The Phantom of the Opera>, <Cats> original visit to Korea, <Rebecca>, <Chicago>, <Wicked>, and <Jekyll and Hyde>. It is a representative cultural landmark where you can enjoy not only No.1 contents such as classic musicals and concerts by various artists, but also experience programs themed around performances such as exhibitions, lectures, and backstage tours.

TIP

Don't miss the Dream Theater Membership D+, which offers differentiated benefits. Membership-limited services such as newsletter service, advance reservations, one-day classes, and concert invitation events are provided, and subscription is free.



Information

2
Metro
Line 2

- Metro Line 2 at The International Financial Center (Exit 3) of Busan Bank Station (formerly Munjeon Station) ▶ 3 minutes on foot
- 1833-3755
- dreamtheatre.co.kr

Suyeong
Mangmi
Baesan
Mulmangol
Yeonsan
Geoje
Sports Complex
Sajik
Minam
Mandeok

⋮

3

Dongnae
Suan
Nangmin
Chungnyeolsa
Myeongjang
Seo-dong
Banyeo Agricultural Market
Seokdae
Youngsan Univ.
Witbansong

⋮

4

Sasang
Gwaebeop Renecite
Seobusan Yutongjigu
Gimhae International Airport
Deokdu
Deunggu
Daejeo
Pyeonggang
Daesa
Buram

⋮

Busan-Gimhae Light Rail

Ilgwang
Gijang
OSIRIA
Songjeong
Sinhaeundae
BEXCO
Centum
Jaesong
Won-dong
Allak

⋮

Donghae Line



Metro Line
3•4

Busan-Gimhae
Light Rail
Transit

Donghae
Line

Take a journey through Busan on Metro Line 3 and 4, and the Busan-Gimhae Light Rail Transit, and Donghae Line, and sit back to escape your busy schedule. A special time unfolds along this route where a coastal walk, the smell of drying fish, children's laughter, and animals exist together in harmony.



Sajik Baseball Stadium

45, Sajik-ro, Dongnae-gu

Sajik Stadium is home to the city's original baseball team, the Lotte Giants. Baseball fan culture in Busan has been well documented, and was even recognized for its uniqueness when covered in The New York Times in 2014. The vigorous roar of an audience with diverse cheering paraphernalia such as orange-colored bags fills the Sajik-dong District whenever baseball games are played.



TIP

The Giants Museum

The entire history of the Lotte Giants can be seen in one glance. Located on the second floor of Sajik Baseball Stadium, the Giants Museum is composed of the History Hall, Baseball Products Hall, and Experience Hall as well as the Themed Zone in the name of Giants' heroes. It operates from 1 p.m. to 7p.m. during the baseball season and from 11 a.m. to 5 p.m. during the weekend. It is closed every Monday and in the off season.



Information

- Metro Line 3 at Sajik Station (Exit 1) ▶ Go straight 200m ▶ (Turn right and walk 500 meters for 14 minutes)
- 051) 590-9000 giantsclub.com

Daejeo Ecological Park

2314-11 Daejeo 1-dong, Gangseo-gu

Daejeo Ecological Park is a natural eco-friendly space with rapeseed flower complex and sports facilities such as soccer field and baseball field. In particular, the rape flower festival held in April at the rape flower complex (370,000m²) created in the park attracts many tourists and has become a new tourist attraction.



Information

- Board Busan Gimhae Light Rail at Toward Deokdu Station ▶
- Transfer Metro Line 3 at Daejeo Station ▶ Get off Gangseo-gu Office Station (Exit 5) ▶ Walk for 13 min
- 051) 971-6011

Let's Run Park Busan Gyeongnam

929, Garak-daero, Gangseo-gu

Let's Run Park Busan Gyeongnam is a composite leisure space where everyone can learn and experience everything about horses and enjoy various other pleasures. Visitors who have a particular desire for horse riding can enjoy lessons that they will never forget.



TIP

Golden Plate on the 3rd floor. Friday, Saturday, and Sunday It is available from 9 to 17. Here Let's fill our stomachs with Korean food such as Baekban, Seolleongtang, and pork cutlet and start looking around the park again.

Information

- Transfer to Busan-Gimhae Light Rail Transit at Sasang Station from Metro Line 2 ▶ Get off at Gwaebepo Recreational Station ▶ Get on the Express Bus 1005 ▶ Get off at the Let's Run Park Busan Gyeongnam Front Gate Bus Stop ▶ Walk about 385m (roughly 6 minutes)
- 1566-3333 park.kra.co.kr/busan

Songjeong Beach

62 Songjeong-dong, Haeundae-gu



While walking along Dalmajgil Road, tourists will pass by a small pavilion called “Haewoljeong” and a cherry blossom colony before encountering the vast sea. This is Songjeong Beach, a coastline that has kept its natural beauty.

Information

Donghae Line

- Donghae Line at Songjeong Station (Exit 1) ▶ Take the bus 139 ▶ Get off at Songjeong Beach Entrance
- 051) 749-5800
- sunnfun.haeundae.go.kr

Skyline Luge in Busan

392-2, Sirang-ri, Gijeong-eup, Gijang-gun

Busan Skyline Luge will be rebuilt in early July 2021. This is an adventure program that involves taking the Skyline (elevator) to the top of the mountain and descending the 2.4km stretch of four tracks on the 'trolley.'



Information

Donghae Line

- Donghae Line Osiria Station (Exit 1) ▶ 10 minutes walk (481 meters)
- 051) 722-6002 skylineluge.kr/busan/

Lotte World Adventure Busan

42 Dongbusan Tourist Road, Gijang-eup, Gijang-gun

Lotte World Busan is an outdoor theme park with 6 zones and 17 attractions under the theme of 'Kingdom in a Fairy Tale'. Let's go to Lotte World Adventure Busan, where the whole family can enjoy themselves away from boring daily life.



Information

Donghae Line

- Donghae Line at OSIRIA Station, (Exit 1) ▶ Walk for 9 min (494 m)
- 1661-2000 adventurebusan.lotteworld.com/

Gijang Lighthouse · Jukseong Cathedral

134-7, Jukseong-ri, Gijang-eup, Gijang-gun

The Catholic Church erected as a setting for the drama “Dream” is still popular even after the series has ended and has been turned into an attraction. Nearby, you can watch unusual lighthouses with different names such as Baseball Lighthouse, Seagull Lighthouse, Worldcup Lighthouse, and Baby Bottle Lighthouse. Pose in front of them for a picture and capture an unforgettable memory.

TIP

Gijang Anchovy Festival

Do not miss the Gijang Anchovy Festival held throughout Daebyeon Port, Gijang-gun every year. This representative spring food of Daebyeon Port is also famous nationwide.



Information

Donghae Line

- Donghae Line at Gijang Station (Exit 1) ▶ Walk 230m ▶ Transfer to the Gijang-gun 6 bus ▶ Get off at Duho ▶ Walk about 400m (A 6-minute walk)
- 051) 709-4000 gijang.go.kr

Haedong Yonggungsa Temple

86 Yonggung-gil, Gijang-eup, Gijang-gun

The Portrait of Putai marking the start of the 108-step stairway leading into the main temple site is stained with handprints because of the rumor that touching the belly of the beloved Buddhist deity in this portrait can make women bear and give birth to sons.



TIP

There are three famous food and drinks to try near Busan Haedong Yonggungsa Temple. They are seafood black bean noodles (haemul jjajang myeon), Korean full-course meal (hanjeongsik), and coffee. The old cafes and restaurants around Yonggungsa Temple and their famous dishes are worth experiencing.



Information



- ☺ Donghae Line at OSIRIA Station (Exit 1) ▶ Take the bus 139
- ▶ Get off at Yonggungsa National Fisheries Research Institute
- ☎ 051) 722-7744
- 🏠 yongkungsa.or.kr

Five Star Hotels 5성호텔

Grand Josun Busan	922-5000	Paradise Hotel Busan	742-2121
Signiel Busan	992-1000	Hotel Nongshim	550-2100
Ananti Hilton Busan	509-1111	The Westin Josun Busan	749-7000
Lotte Hotel Busan	810-1000	Park Hyatt Busan	990-1234

Four Star Hotels 4성호텔

Avani Central Busan Hotel	791-5800	Shilla Stay Haeundae	912-9000
Asti Hotel Busan	409-8888	Commodore Hotel Busan	466-9101

Three Star Hotels 3성호텔

tt Hotel	808-5514	Htel Central Bay	982-9700
Benikea Premier Hotel Haeundae	760-7000	Fairfield by Marriott Busan Songdo Beach Hotel	260-0000
Busan Business Hotel	808-2000	Homers Hotel	750-8000
ibis Ambassador Busan City Centre	930-1100	Standford Inn Busan	795-7700
Tower Hill Hotel	250-6100	Hotel Aqua Palace	790-2300
Hotel Foret Premier Haeundae	743-2853		

Two Star Hotels 2성호텔

Brown Dot Hotel Deokcheon	341-3991	H Avenue Hotel Gwangalli Beach	751-5858
Grand Bern Hotel	414-1300	Air Sky Hotel	971-0093
Shire Hotel Seomyeon	806-7172	Seattle B Hotel	852-7685
2 Heaven Hotel	757-7661	Toyoko Inn Busan Station No. 2	741-1045
TRT Hotel Busan	819-8231	The Point Hotel Gwangalli	929-8600
Sorgente Business Hotel	715-2340	Busan Beach Tourist Hotel	231-0750
Myeongji Oia Hotel	207-1201	Ocean 2 Heaven Hotel	761-3001
Suntree Hotel	742-0021	Libero Hotel	740-2111
Lamer Hotel	634-3001	Best Louis Hamilton Hotel Gwangang	760-0808
Hotel Londoner Gwananlli	755-0055	Brown Dot Hotel Hadan	201-3994
Best Louis Hamilton Hotel West Busan	660-6900	Hotel 1	759-1011
Hotel Laon	714-0003	Hotel Forêt Busan Station	463-6171
Lion Hotel	808-3593	ibis Budget Ambassador Busan Haeundae	901-1111
Hound Hotel Gijang Ilgwan	723-3322	South Vandeco Hotel	815-5252
Ciel Ocean Hotel	271-8686	Hotel Gwang Jang	464-3141
Utopia Hotel	757-1100	Toyoko Inn Busan Station No. 1	466-1045
Mipo Oceanside Hotel	601-4300	Bay Hound Hotel	413-1114
Hound Hotel	755-0072	Toyoko Inn Busan Haeundae No. 2	442-1045
JB Design Hotel	750-9000	G&G Hotel	626-7723
Best In City Hotel	464-8883		

One Star Hotels 1성호텔

Brown Dot Hotel Gwangang Beach	753-3288	Brown Dot Hotel Jeonggan	728-8100
H Avenue Hotel Gwangalli	753-1340	U&Songdo Hotel	242-6635
Las Vegas Hotels	203-8442	Le Idea Hotel	611-6643

TIP

①

Things to do
Places to shop in
Busan

②

Busan and the Sea
Enjoy a cruise
around Busan

- Here is a tip for making your trip to Busan more special •

You have arrived here in Busan with a backpack and we will share with you, the side of Busan that is even more fun and charming. Blue sea, fresh seafood, camellia, and seagulls -things that symbolize Busan and green nature in various parts of the city all make Busan a city loved by people from all over the world.

Busan's distinct four seasons attract visitors with different attractions and the city is remembered by all as a place to come again.

With pleasant memories of eating, experiencing, and indulging.

Now let's hope the tips we offer can help you get a richer taste of Busan.

TIP

1

Things to do! Places to shop in Busan

Busan Premium Outlet -
Lotte Premium Outlet Dongbusan Branch -
Shinsegae Centum City/Lotte Dept. Store -
Hyundai Dept. Busan Branch
Lotte Duty Free Shop, Shinsegae Duty Free Shop -
Gimhae Airport Duty Free Shop
Seomyeon Underground Shopping Center -
IKEA DongBusan -
Bupyeong-dong Night Market -

Places to shop in Busan

Outlet · Department



Lotte Premium Outlet Dongbusan Branch

Other than the outlet, Lotte Mart, Lotte Cinema, and Hi Mart can also be found, creating a satisfying shopping and cultural space. Since its opening in 2014, Lotte Premium Outlet has striven to be a comprehensive shopping mall full of Santorini's romanticism. In addition to the shopping mall, the interior boasts Fountain Square, Lighthouse Observatory, and Rose Garden which conjures exotic feelings of Greece

📍 147, Gijanghaean-ro
☎️ 051) 901-2500

Busan Premium Outlet

Busan Premium Outlet is composed of 180 strictly chosen overseas brands such as Armani and Marc Jacobs, as well as popular domestic brands such as Obzee and KUHO. It sells carry over products but has the atmosphere of a premium shopping mall. It is open until 8p.m. during weekdays and until 9p.m. on weekends and holidays.

📍 1133, Jeonggwan-ro, Jangan-eup, Gijang-gun
☎️ 1644-4001



Shinsegae Centum City/Lotte Dept. Store/Hyundai Dept. Busan Branch

Shinsegae Department Store This was listed as the World's Largest Department Store in the Guinness Book of World Records in 2009, and the record still stands. In addition to the shopping center, it is equipped with various leisure facilities such as Spa Land, an ice rink, Sky Park, and CGV Cinema. ☎️ 1588-1234

Lotte Department Store This department store has four branches in Busan. Including the Centum City Branch, the first shopping commercial sphere within Centum City, Lotte Department Store operates also operates a Busan Main Branch, Dongnae Branch, and Gwangbok Branch. Every branch also boasts a Lotte Cinema for visitors to enjoy. ☎️ 1577-0001

Hyundai Department Store The only Hyundai Department Store in Busan is located in Beomil-ro, Dong-gu. This 9-story store has a variety of amenities for customers, including a nursing room and cafes. There are neighboring commercial spaces, such as Jayu Market and Jewelry Market. ☎️ 051) 667-2233

Duty Free Shop · Shopping Mall·Night Market

Lotte Duty Free Shop / Shinsegae Duty Free Shop / Gimhae Airport Duty Free Shop

A duty-free shop district is a small shopping paradise for travelers. Lotte Duty Free Shop, Shinsegae Duty Free Shop, and Gimhae Airport Duty Shops run by Lotte and Shinsegae are available in Busan. Goods purchased in each duty-free shop can be received only after proceeding through the customs gate at the airport or port.

Lotte Duty Free Shop 8F, 503-15, Bujeon-dong, Busanjin-gu ☎️ 051) 810-3880

Shinsegae Duty Free Shop B1/1F, 15, Centum4-ro, Haeundae-gu ☎️ 1511-8778

Gimhae Airport Duty Free Shop 2350, Daejeo2-dong, Gangseo-gu ☎️ 051) 970-2701

Lotte Duty Free Shop Gimhae International Airport ☎️ 051) 979-1900

Dufry Thomas Julie Korea Gimhae International Airport Branch ☎️ 1899-3819

Busan Duty Free Yongdusan Branch ☎️ 051) 460-1900

Busan Duty Free Busanhang Branch ☎️ 051) 460-0900

Seomyeon Underground Shopping Center

Seomyeon Underground Shopping Center busanjeom is a leading underground shopping mall in Busan, with about 570 dozen stores.

📍 Shopping Center, 786, Jungang-daero, Busanjin-gu



IKEA Dongsan Branch

Headquartered in Sweden, IKEA is the world's largest retailer of furniture, groceries and daily necessities. Including 1 basement and 4 ground floors, open from 10:00 to 22:00 on weekdays, weekends and public holidays. Let's plan shopping with Lotte Mall Dongbusan branch right next door..

📍 17, Dongbusan Gwangwang 3-ro
☎️ 1670-4532

Bupyeong Kkangtong Night Market

Bupyeong-dong Night Market is the first traditional market nationwide to shift to a night market designed for culture and tourism. It is open from 6 p.m. to midnight, welcoming visitors all year round. You can enjoy tasting not only domestic dishes, but also traditional cuisine of neighboring countries.

📍 39, Bupyeong 1-gil, Jung-gu
☎️ 051) 243-1128



Busan and the Sea Enjoy a cruise around Busan

There are many ways to enjoy Busan.

However, the best way to enjoy the marine city of Busan is to go on a cruise out of Haeundae, Busan Port or Taejongdae.

Choose any venue, and start your cruise.

YACHT TALE

Main Building #102, Suyeong Bay Yachting Center,
84 Haeundaehaebyeon-ro, Haeundae-gu

It offers a yacht stay program, which is a yacht rental service, for the first time in Korea. You can charter a luxury yacht on the sea to make special memories with your family, friends, and colleagues. Please feel free to choose one among a wide range of options, including family and deluxe yachts.

T. 1599-1789 H. www.yachttale.com

- Dongbaek Station, Subway Line 2 (Exit 3) ▶ Go straight for 450m
▶ Turn left at Seungdang Samgeori ▶ Go straight for 300m

Course Info

• [Public Yacht Tour] Suyeong Bay Yachting Center ▶ Marine City ▶ Dongbaekseom Island (Nurimaru) ▶ Haeundae Beach ▶ (Cross) Gwangandaegyo Bridge ▶ Gwangalli Beach ▶ The Bay 101 ▶ Suyeong Bay Yachting Center

[Operating Hours] Daytime Sightseeing Tour 12:00, 14:00, 16:00 / Night Sightseeing Tour 18:00, 19:00, 20:00(weekend)

• [Private Yacht Tour] Suyeong Bay Yachting Center ▶ Marine City ▶ Dongbaekseom Island (Nurimaru) ▶ Haeundae Beach ▶ (Cross) Gwangandaegyo Bridge ▶ Gwangalli Beach ▶ The Bay 101 ▶ Suyeong Bay Yachting Center

[Operating Hours] Daytime Sightseeing Tour 10:00a.m. ~ 4:00p.m. departure time /
Night Sightseeing Tour 5:00p.m. ~ 9:00p.m. departure time

The Bay 101

52, Dongbaek-ro, Haeundae-gu

The Bay 101 Yacht Club is a high-quality public marina facility filled with Korea's best marine leisure boats, including high-speed jet boats, speedboats, jet skis, and Korea's largest 76-foot catamaran yacht.

T. 051) 726-8855 H. <http://www.thebay101yacht.com>

- Metro Line 2 Dongbaek Station (Exit 1) ▶ Towards Dongbaek Sageori ▶ Walk about 285m to get to The Bay 101 (A 5-minute walk)

2

Busan and the Sea Enjoy a cruise around Busan

YACHT TALE -

The Bay 101 -

Taejongdae Gwangwang Cruise Ship -

Haeundae Excursion Boats -

Nakdonggang River Eco Tour Cruise -

Jagalchi Cruise -

Panstar Cruise -

Course Info

• **Public tour** (Sailing Time: Approx. 60 min per session)
Weekly) 13:00, 15:00 / Night time) 17:00, 18:00, 19:00, 20:00 (weekend)

• **Private Tour** Day time) 10:00~22:00 (Sailing Time: Approx. 60 min per session) Possible to sail at your desired time between 10:00 and 22:00

※ Weekends: Fridays, Saturdays, Sundays, public holidays, and other holidays



The Bay 101 52, Dongbaek-ro, Haeundae-gu

Taejongdae Gwangwang Cruise Ship

Within Taejongdae Recreation Area, Dongsam-dong

This ship is designed to take a trip around Taejongdae from the nearby dock. This is a round-trip to Jodo Island (Arch Island) where Korea Maritime University is situated, taking approximately 40 minutes. Passengers can view nearby migratory birds, magnificent natural scenery, and the open sea on board.

T. 051) 405-3989 H. taejongdae.bisco.or.kr

• Metro Line 1 at Nampo Station (Exit 6) ▶ Transfer to Bus 8,30,66, or 88 ▶ Get off at the Taejongdae Bus Stop ▶ Toward Taejongdae Recreation Area

Course Info

1. Gamji Beach Dock (Tel. 051)405-3989) Dock > Jodo Island > Taejongdae Sea > Dock
2. Gonpo Garden Dock (Tel. 051)405-2900) Dock > Jodo Island > Taejongdae Sea > Dock
3. Taewon Jagal Madang Dock (Tel. 051)403-9098) Dock > Jodo Island > Taejongdae Sea > Dock
4. Deungdae Jagal Madang Dock (Tel. 051)405-1700) Dock > Jodo Island > Taejongdae Sea > Dock

Haeundae Excursion Boats

33-1 Dalmaji-gil 62beon-gil, Haeundae-gu

Haeundae Cruise, based in Busan, offers extraordinary cruise programs : Oryukdo Islets Marine Tour to drink with a panoramic coastal view of beautiful Busan by day and the Night Sightseeing Tour to enjoy the breath taking view of Gwangandaegyo Bridge by night.

T. 051) 742-2525 ※ Please bring your ID card.

• Metro Line 2 at Jungdong Station (Exit 7) ▶ Go straight for 600 meters ▶ Turn right at Mipo Junction toward Haeundae Cruise ▶ Go s for 200 meter straight

Course Info

• **Daytime Oryukdo Islets Return Trip (About 70 minutes)**

Haeundae (Mipo) ▶ Dongbaekseom Island (Nurimaru) ▶ Gwangandaegyo Bridge
▶ Igidae Cliff ▶ Oryukdo Islets

Departure Times 10:00 a.m. to sunset

• **Gwangandaegyo Bridge Night Sightseeing Tour (About 50 minutes)**

Haeundae (Mipo) ▶ Dongbaekseom Island (Nurimaru) ▶ Gwangandaegyo Bridge
▶ Gwangalli Beach

Departure Times sunset to 9:00 p.m.

※ For inquiries, call Panstar Cruise



※ The schedules and fares provided are as of November 2019, and may be subject to change.

Nakdong River Eco Tour Cruise

Eulsukdo Quay : Inside Eulsukdo Eco Park, Nakdongnam-ro
1233beon-gil, Saha-gu (Open from April to October) Hwamyong
Quay : Inside Hwamyong Eco Park, Gangbyeon-daero,
Deokcheon-dong, Buk-gu (Open from November to March)

This is a course departing from Eulsukdo and passing through Hwamyong and going back to Mulgeum in Yangsan. It is called the "Nakdong River Eco ferry" You may enjoy the time assimilating with nature and admiring the beautiful natural scenery.

T. 051) 294-2135 H. bto.or.kr/eco

Course Info

• [from April to October] WED/THU Departure Times 9:30, 10:30, 13:30, 16:00, 17:00
Cruise Route [Euksukdo Island - Irungdo Island (30 minutes) / Euksukdo Island - Daedong (2 hours)]

• [from April to October] FRI/SAT Departure Times 9:30, 10:30, 13:00, 14:10, 15:00
Cruise Route [Euksukdo Island - Irungdo Island (30 minutes) / Euksukdo Island - Daedong (2 hours) /
Euksukdo Island - Mulgeum (4 hours)]

• [from April to October] SUN Departure Times 9:30, 10:30, 14:30, 17:00

Cruise Route [Euksukdo Island - Irungdo Island (30 minutes) / Euksukdo Island - Daedong (2 hours)]

• [November to March] TUE to SUN Departure Times 9:20, 10:20, 11:20, 14:00, 16:00
Cruise Route [Hwamyong - Mulgeum (1 hour and 20 to 40 minutes)]

※ No services are available on Mondays.

※ For any inquiries regarding our services, please feel free to contact us by phone beforehand.

Jagalchi Cruise

60, Jagalchihaean-ro, Jung-gu

Create romantic memories with Jagalchi Cruise! Enjoy the blue seas of Busan during the daytime, and shift to the red hue of the sunset in the evening. Enjoy Busan with Jagalchi Cruise!

T. 051) 241-0909 H. jagalchi-cruise.com

Course Info

Jagalchi Market > Amnam Park > Taejongdae Park > Jagalchi Market, maximum of 5 trips per day (4 trips guaranteed, final trip depending on demand), 90 minutes per trip

Panstar Cruise

60, Jagalchihaean-ro, Jung-gu

Panstar Cruise provides a special time with performances and events together. It consists of a cruise zone and a ferry zone, both of which provide a variety of services to meet customers demands for a high quality and substantial trip. Passengers using the ferry zone can also apply for additional upgraded cruise zone services on board after payment.

T. 1577-9996 H. www.panstarcruise.com

•Metro Line 1 at Jungangdong Station (Exit 14) - Free shuttle bus recommended

Course Info

•Night-to-Remember Cruise (2 Days 1 Night)

: provides a fanta stic view of the seashore of Busan.

- Taejongdae > Haeundae > Gwangalli (Gwangandaegyo Bridge) > Oryukdo > International Passenger Terminal (Jungang-dong)
- Fares : KRW 130,000 to 350,000 (varies by guestroom).

•Hyeonhaetan One-Night Cruise (2 Days 1 Night)

You can cruise cross the Sea of Hyeonhanetan to enjoy the view of Daemado Island(Hitakatsu) at close range. Please note that the cruise departs every third Saturday of the month

•Charter Cruise : Charter a cruise for an unforgettable private party at sea.

※ For inquiries, call Panstar Cruise



Panstar Cruise
15-3, Jungang-dong 4-ga, Jung-gu

Taejongdae Gwangwang Cruise Ship
Within Taejongdae Recreation Area, Dongsam-dong

www.visitbusan.net/en

Come and Visit Busan

An exciting virtual
trip to Busan!
www.visitbusan.net/en

Get to know the real stories
behind Busan on Visit Busan,
the official travel guide to
Busan Metropolitan City!

VISIT
BUSAN

